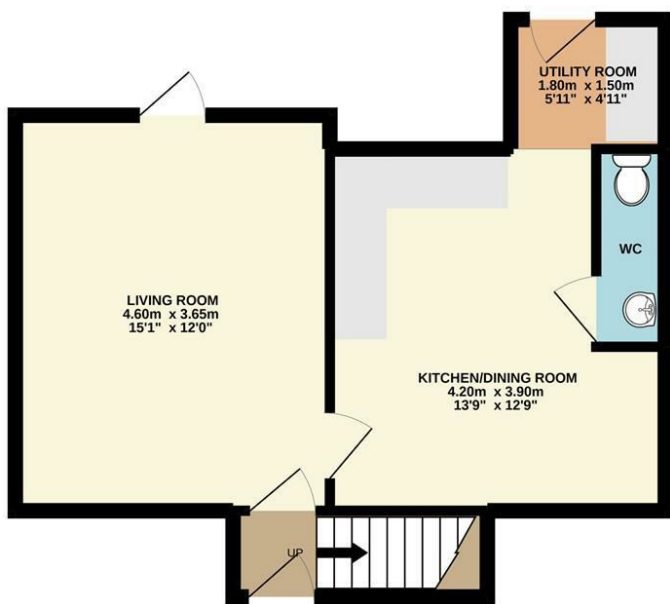




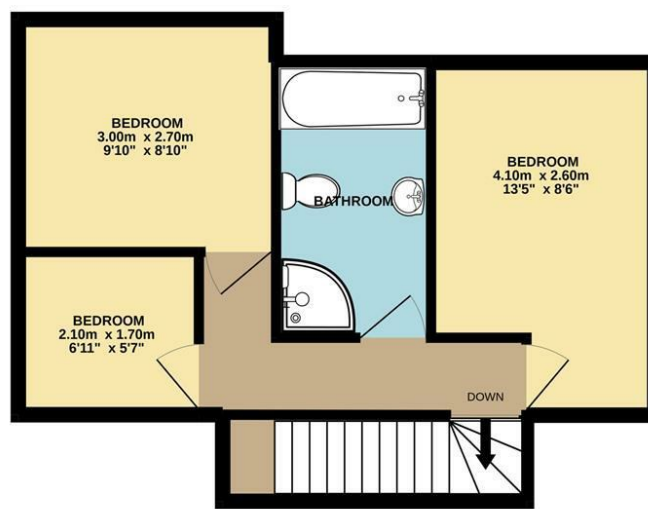
Birkbeck Close | Norwich | NR1  
 Guide Price £210,000

abbotFox

GROUND FLOOR  
 38.8 sq.m. (418 sq.ft.) approx.



1ST FLOOR  
 35.3 sq.m. (380 sq.ft.) approx.



TOTAL FLOOR AREA: 74.1 sq.m. (798 sq.ft.) approx.

Whilst every attempt has been made to ensure the accuracy of the floorplan contained here, measurements of doors, windows, rooms and any other items are approximate and no responsibility is taken for any error, omission or mis-statement. This plan is for illustrative purposes only and should be used as such by any prospective purchaser. The services, systems and appliances shown have not been tested and no guarantee as to their operability or efficiency can be given.  
 Made with Metropix ©2022

Energy Efficiency Rating		
	Current	Potential
Very energy efficient - lower running costs		
(92 plus) <b>A</b>		
(81-91) <b>B</b>		
(69-80) <b>C</b>		
(55-68) <b>D</b>		
(39-54) <b>E</b>		
(21-38) <b>F</b>		
(1-20) <b>G</b>		
Not energy efficient - higher running costs		
<b>England &amp; Wales</b>	EU Directive 2002/91/EC	

Disclaimer – In accordance with the Property Misdescriptions Act, the company gives notice that all descriptions, references to condition, necessary permissions for use and other details are given in good faith and believed to be correct, but any intending lessees do not rely on them as statements of fact, but must satisfy themselves by inspection or other means, as to their accuracy.



abbotFox presents this mature, semi-detached house. Situated within easy reach of a variety of local amenities, and Norwich City Centre, this is an ideal opportunity for any first time buyer or young family. Occupying a generous plot, with a detached garage to the rear, this home offers three bedrooms and a family bathroom to the first floor, with the ground floor comprising, entrance hall, lounge, kitchen diner, utility area and wc. An internal viewing comes highly recommended.

Guide price £210,000 - £220,000

